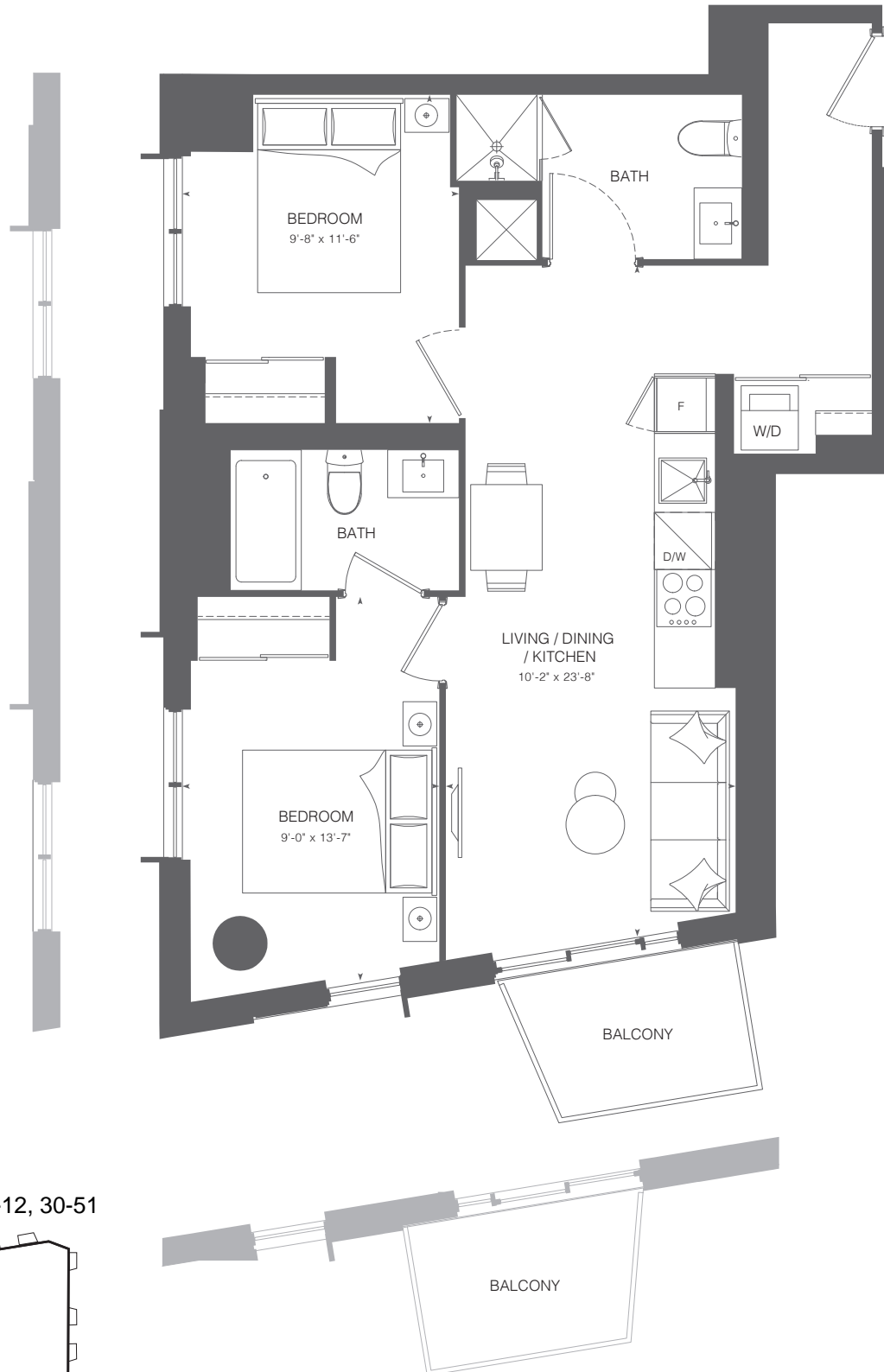


KIPLING STATION CONDOS



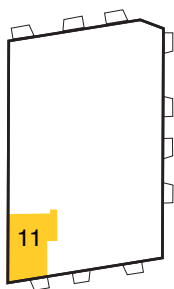
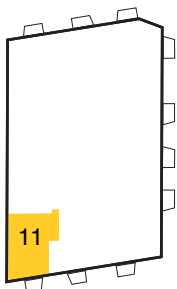
KIPLING733

2 Bedrooms / 2 Bathrooms
Interior 733 SF



Levels 15-29

Levels 6-12, 30-51



All prices, figures, sizes, specifications and information are subject to change without notice. E. & O.E. All areas and stated dimensions are approximate. Actual usable floor space, living area and square footage may vary from stated floor area. All illustrations are artist's concept only. Actual unit and/or balcony and/or terrace and/or patio may be a reverse mirror image of the plan presented. Exterior building elements may be visible from within unit, including but not limited to frit patterning, mullion/metal panel placements, or other visual treatments. Balconies and/or terraces and/or patios may include planters and/or trees and/or gardens. Units may include bulkheads and/or angled columns. The purchase price does not include any furniture. © 2023 CentreCourt Developments. All rights reserved.